



FieldLogix

Field Resource Management

Navigation Quick Start Guide



With the Garmin Navigation device Connected via the cable provided, turn the vehicle on and wait until you see the screen shown to the right.




Receiving a Job / Stop

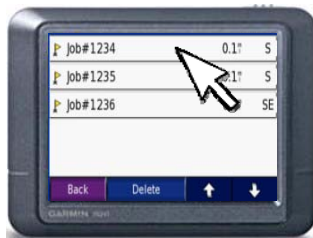
When a stop has been dispatched to you, an icon will appear on the top right of the Garmin screen.



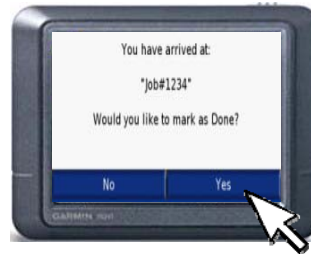
Once "Go" is selected, the Garmin device will begin routing you to the destination.



Touch the  icon to move to the next screen.



Once you arrive at the stop, you will be asked "Would you like to mark as done?" Select "Yes" to mark stop as completed.



Choose the stop with the flag and select "Go".



The stop is now complete.

Receiving A Message

When a message has been sent to you, an icon will appear on the top right of the Garmin.



Touch the  icon to view the message.



To Reply, select the message and then choose to reply to the message.



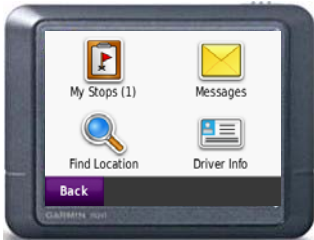
A pre-programmed message will be available to be chosen as a reply to the message received. This message may either be "Ok", "Yes", or "No". Please make sure to select one.



****If there are any pending stops or messages that have not been completed, return to the main screen and touch the**



icon. This will bring you to the menu screen to search for any incomplete stops or pending messages.**





Copyright © 2010 FieldLogix
888-803-0200 support@fieldlogix.com